

Sertifikalarımız / Our Certificates



Telecom Manhole Covers

USD - 1100

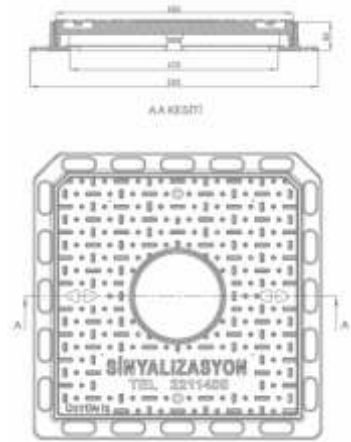
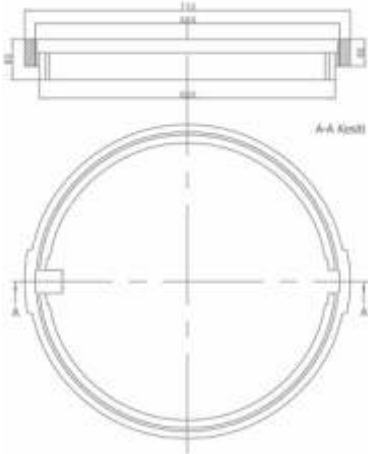


kg

32±2

GG 25

EN GJL 250



kg

48±2

GG 50

EN GJS 500/7

P

B 125

3

Grey iron casting, manhole raising circle. It is used for raising manholes which remains under the level of road.

Telecom Manhole Covers

USD - 1102



Ductile iron casting, substructure manhole cover, it has double locking device.

USD - 1101



kg

35±2

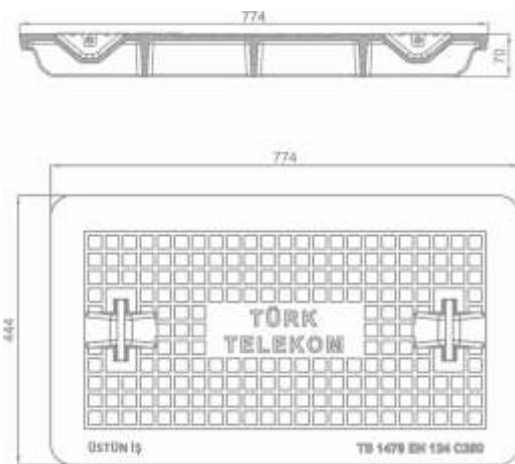
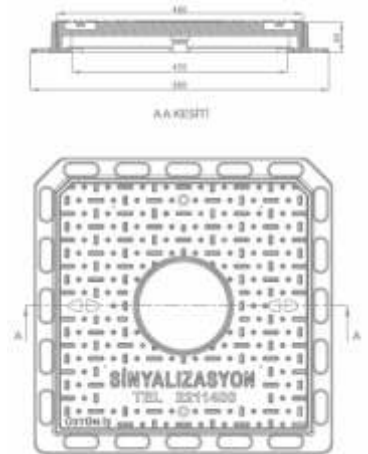
GG 50

EN GJS 500/7

P

B 125

2



kg

45±2

GG 50

EN GJS 500/7

C 250

Ductile iron casting, substructure manhole cover, it has double locking device.

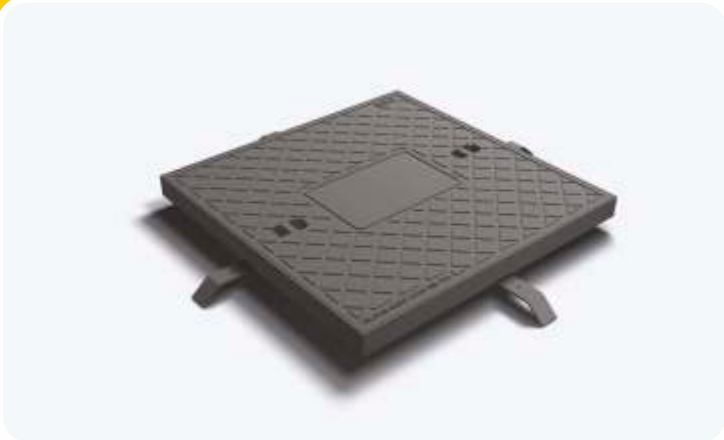
USD - 1103



Ductile iron casting, rectangle cover.

Telecom Manhole Covers

USD - 1104





kg

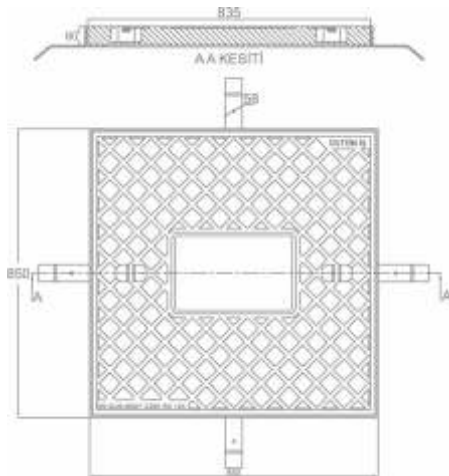
85±3



EN GJS 5000/7



C 250



Ductile iron casting,rectangle cover.The frame is made from 60 mm "L" angle iron.

Telecom Manhole Covers

USD - 1106



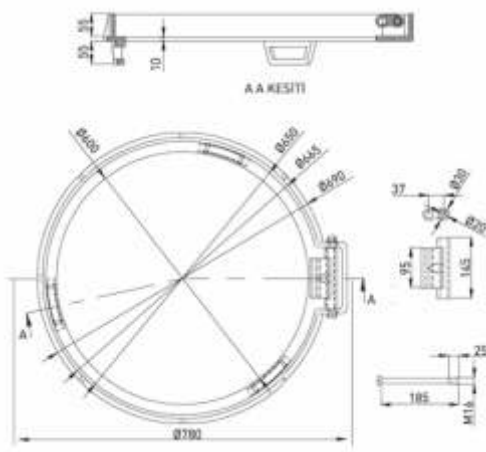


kg

24±2



EN GJS 500/7



Ductile iron casting, manhole raising circle.It is used for raising manholes which remains under the level of road.

USD - 1105





kg

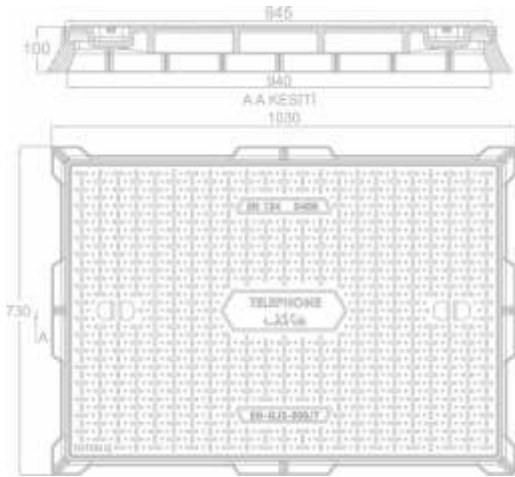
90±3



EN GJS 500/7



D 400



Ductile casting substructure manhole cover.The cover is painted with industrial dye.

USD - 1107





kg

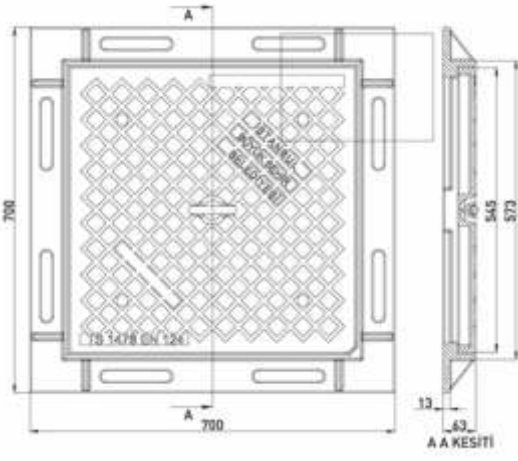
75±3



EN GJS 500/7



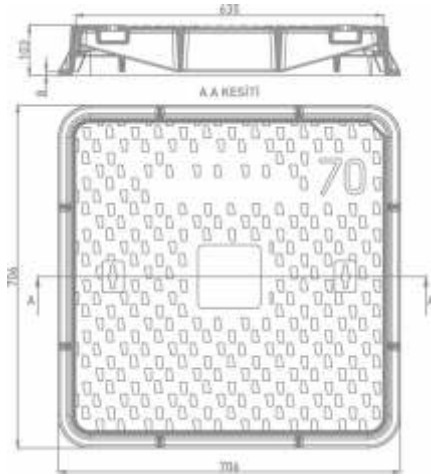
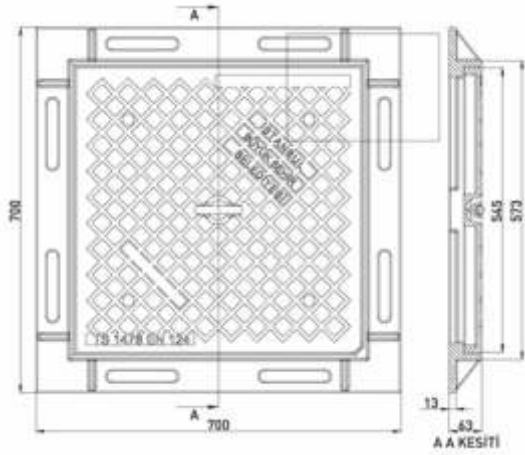
C 250



Ductile casting manhole cover.It has double hinged can open 180°. It has three locks. The cover and frame are milled by lathe."EPDM 70±5 SHORE A"type"T rubber gasket is assembled to the cover. The cover is painted with industrial dye.Stainless chrome nickel steel bolt and pins are used at the hinge and locks.

Telecom Manhole Covers

USD - 1108



Ductile casting, telecommunication substructure manhole cover. It is painted with industrial dye.

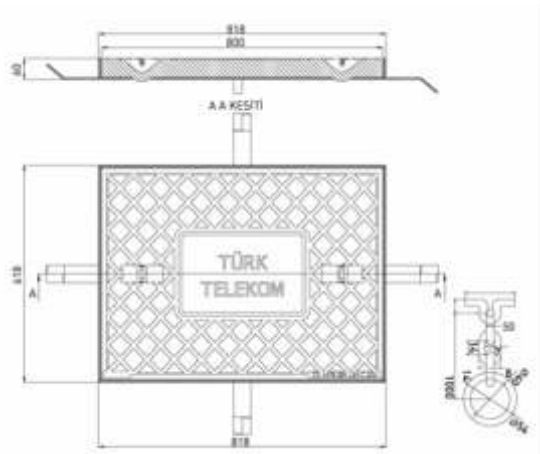
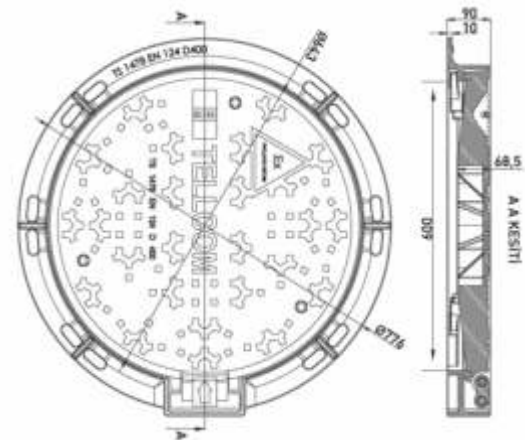
Telecom Manhole Covers

USD - 1110



Ductile casting, telecommunication substructure manhole cover. It is painted with industrial dye.

USD - 1109



Ductile casting manhole cover. It has double hinged can open 180°. It has three locks. The cover and frame are milled by lathe. "EPDM 70±5 SHORE A" type "T" rubber gasket is assembled to the cover. The cover is painted with industrial dye. Stainless chrome nickel steel bolt and pins are used at the hinge and locks.

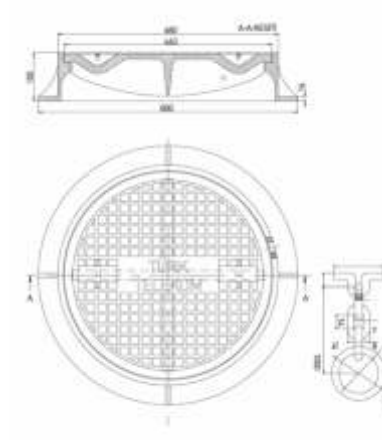
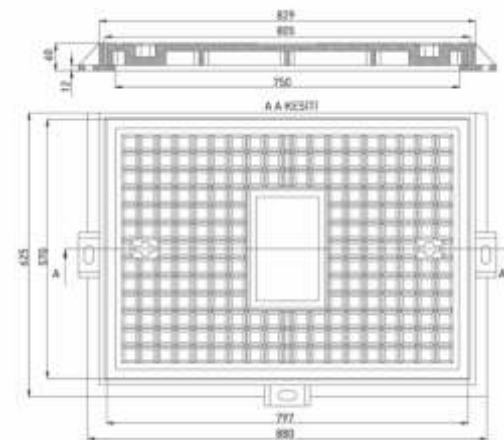
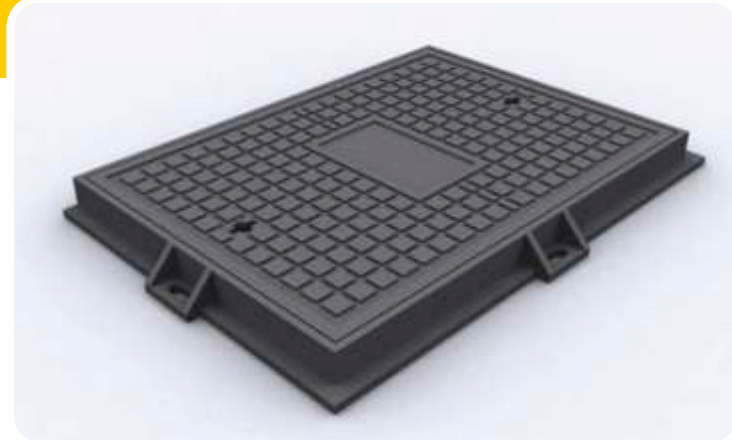
USD - 1111



Ductile iron casting, rectangle cover. The frame is made from 6mm "L" angle iron, for security the cover is attached to the frame with a galvanized chain.

Telecom Manhole Covers

USD - 1112

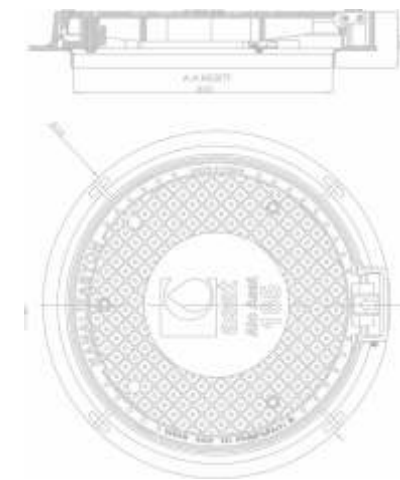
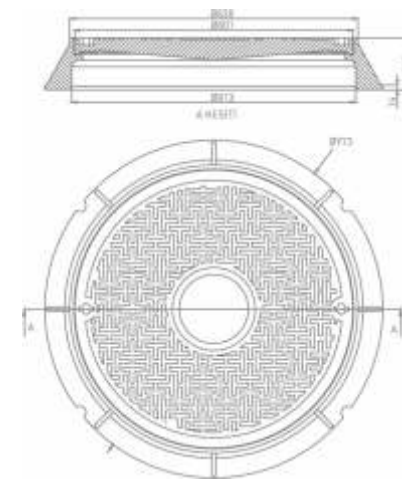


Telecom Manhole Covers

USD - 1114

Grey cast iron, heavy type manhole cover. Cover and frame milled by lathe. Cover is connected to the frame with galvanized chain for security.

USD - 1113



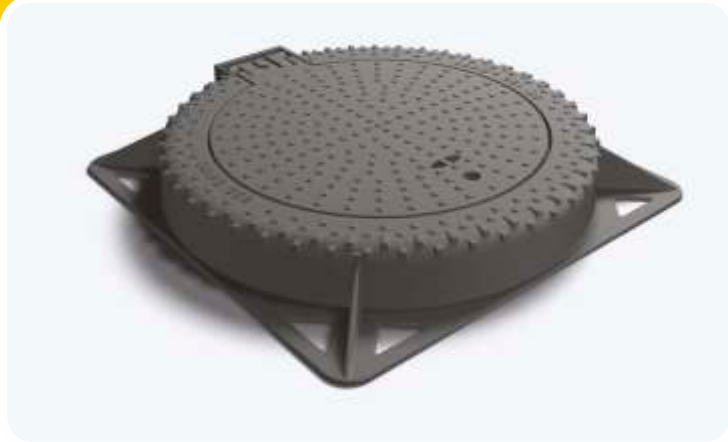
Sewerage Systems Rogar Covers

USD - 1115

Ductile cast iron, heavy type manhole cover. Cover and frame are milled by lathe and painted with industrial dye.

Ductile casting manhole cover. It has double hinged can open 180° it has three locks. The cover and frame are milled by lathe. EPDM 70±5 SHORE A type T rubber gasket is assembled to the cover. It is painted with industrial dye. Stainless chrome nickel steel bolt and pins are used at hinge and locks.

USD - 1116



kg

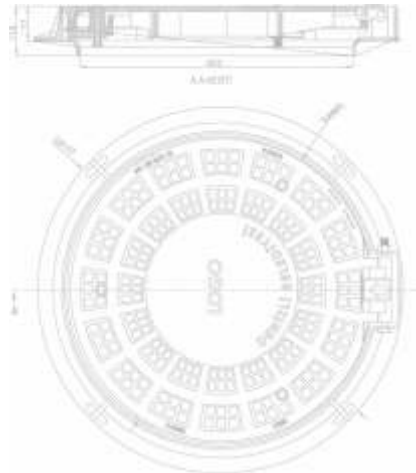
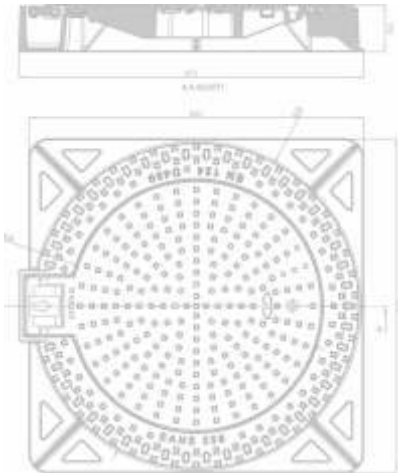
95±3

UGG 50

EN GJS 500/7

D 400

1



kg

70±3

UGG 50

EN GJS 500/7

C 250

3

Ductile casting manhole cover.It is hinged can open 180° It has single lock.The cover is painted with industrial dye. Stainless chrome nickel steel is used at the lock bolt.

Ductile casting manhole cover.It has double hinged can open 180°.It has three locks.The cover and frame are milled by lathe."EPDM 70±5 SHORE A" type "T" rubber gasket is assembled to the cover.It is painted with industrial dye.Stainless chrome nickel steel bolt and pins are used at t

USD - 1118



USD - 1117



kg

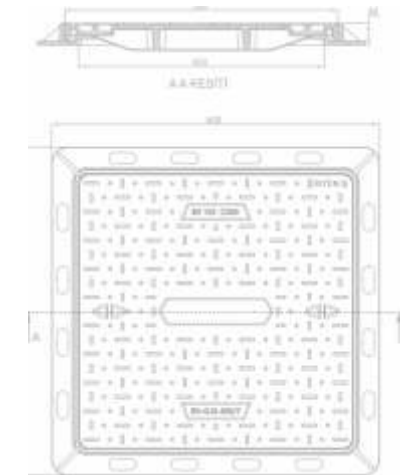
53±3

UGG 50

EN GJS 500/7

D 400

1



kg

36±3

UGG 50

EN GJS 500/7

C 250

Ductile casting manhole cover.It has double hinged can open 180°.It has three locks.The cover and frame are milled by lathe."EPDM 70±5 SHORE A" type "T" rubber gasket is assembled to the cover.It is painted with industrial dye.Stainless chrome nickel steel bolt and pins are used at the lock bolt

Ductile casting manhole cover.The cover is painted with industrial dye.

USD - 1120



kg

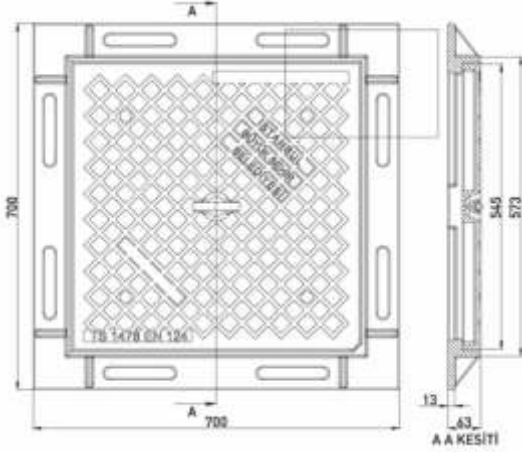
55±3

GGG 50

EN GJS 500/7

D 400

2



kg

200±5

GGG 50

EN GJS 500/7

F 900

Ductile casting manhole cover.It has two locks.The cover is painted with industrial dye."EPDM 70±5 SHORE A" type rubber gasket is assembled to the cover.Stainless chrome nickel steel is used at the lock bolt.

USD - 1122



ical manhole cover ductile iron castings.The cover is painted with industrial dye

USD - 1121



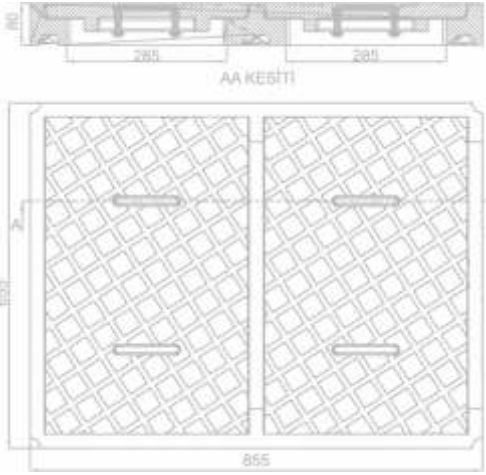
kg

100±3

GGG 50

EN GJS 500/7

F 900



kg

200±5

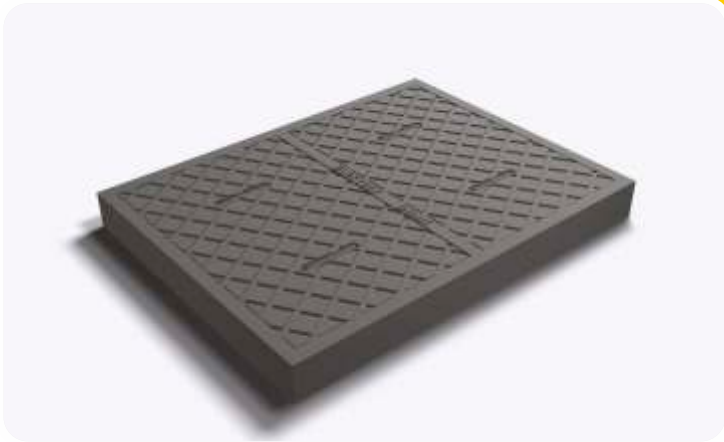
GGG 50

EN GJS 500/7

F 900

Tile cast iron drainage manhole cover.The cover is painted with industrial dye.

USD - 1123



Handhole cover ductile iron castings.The cover is

USD - 1124



kg

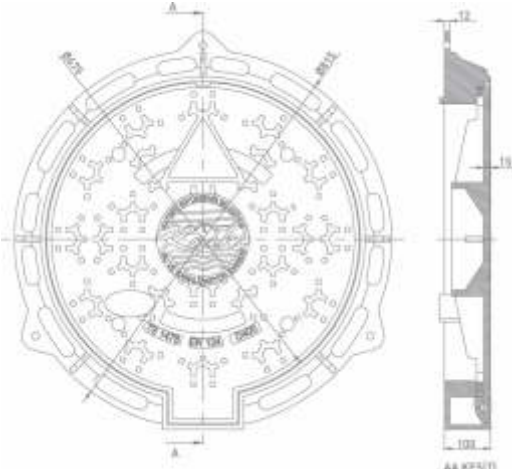
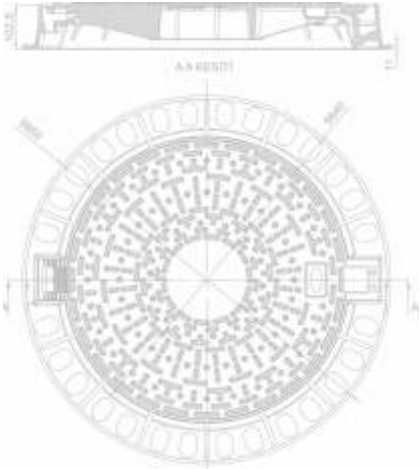
60±3

GGG 50

EN GJS 500/7

D 400

1



kg

63±3

GGG 50

EN GJS 500/7

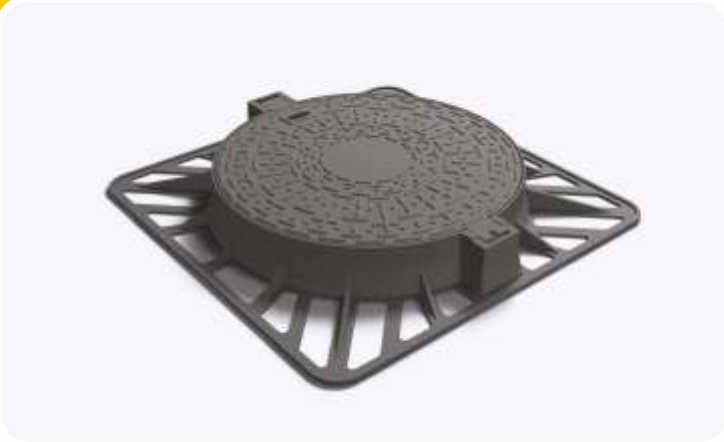
D 400

1

Ductile casting rogar cover.It is hinged can open 120°.It has settled lock."EPDM 70±5 SHORE A" type rubber gasket as assembled to the frame.It is painted with industrial dye.

Ductile casting manhole cover The hinge open 110°It has settled lock The cover and frame are milled by lathe "EPDM 70±5 SHORE A type rubber gasket is assembled to the cover It is painted with industrial dye. Stainles chrome nickel steel bolt and pins are used at the hinge.

USD - 1125



kg

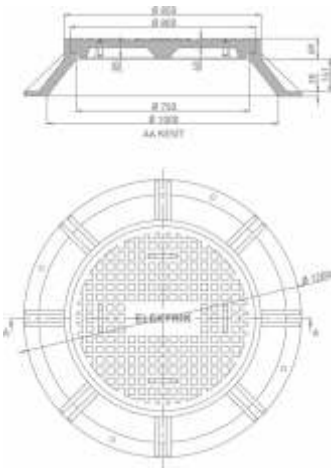
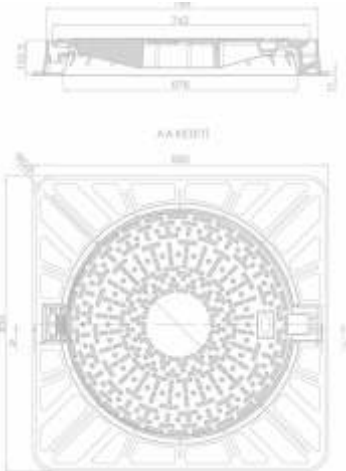
63±3

GGG 50

EN GJS 500/7

D 400

1



kg

500±10

GGG 50

EN GJS 500/7

F 900

Ductile casting rogar cover.It is hinged can open 120°.It has settled lock."EPDM 70±5 SHORE A" type rubber gasket as assembled to the frame.It is painted with industrial dye.

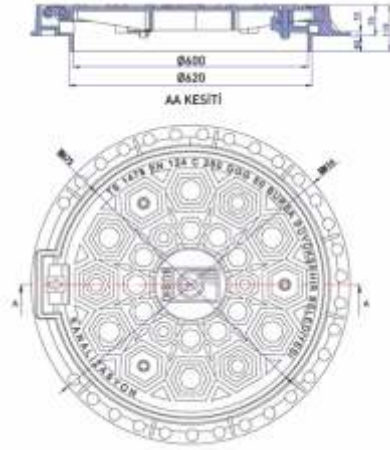
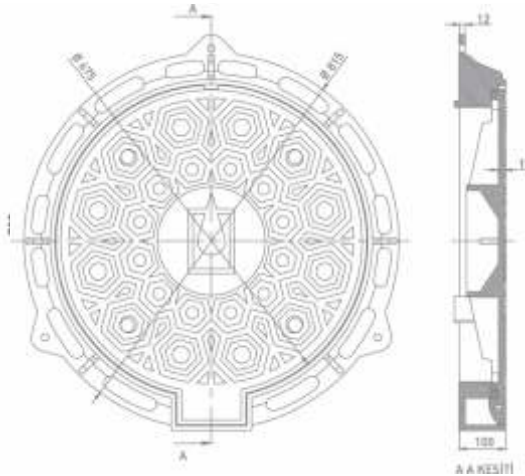
USD - 1127



Ductile casting manhole cover It is painted with industrial dye

Sewerage Systems Covers

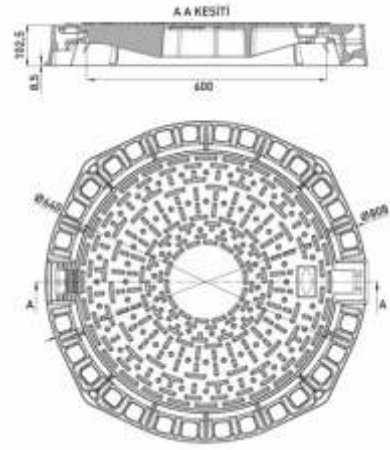
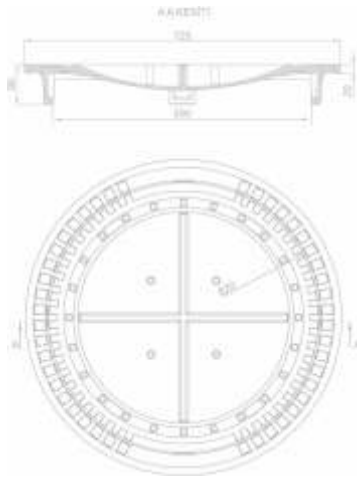
USD - 1128



Ductile casting manhole cover The hinge can open 110°It has settled lock THE cover and frame are milled by lathe "EPDM 70±SHORE A TYPE rubber gasket is assembled to the cover It is painted with industrial dye. Stainless chrome nickel steel bolt and pins are used at the hinge.

Ductile casting manhole cover It has double hinged can open 180°it has three locks. The cover and frame are milled by lathe " EPDM 70±5 SHORE A type T rubber gasket is assembled to the cover It is painted with industrial dye Stainless chrome nickel steel bolt and pins are used at the hinge and locks.

USD - 1129

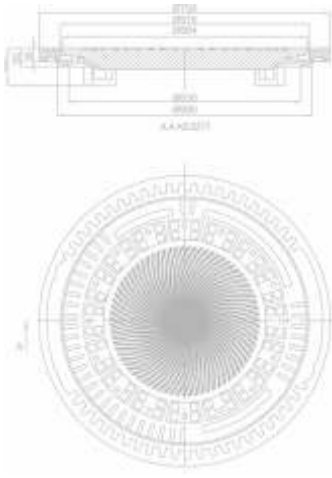
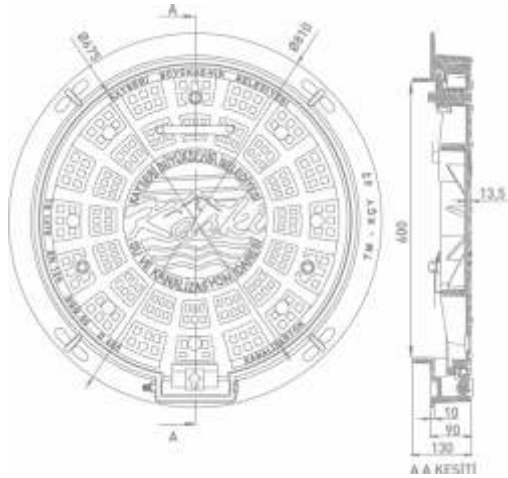


Sewerage system grey iron casting rogar cover.

Ductile casting manhole cover It has double hinged can open 180° it has has three locks. The cover and frame are milled by lathe "EPDM 70±5 SHORE A type T rubber gasket is assembled to the cover It is painted with industrial dye. Stainles chorome nickel steel bolt and pins are used at the hinge and lock



USD - 1132

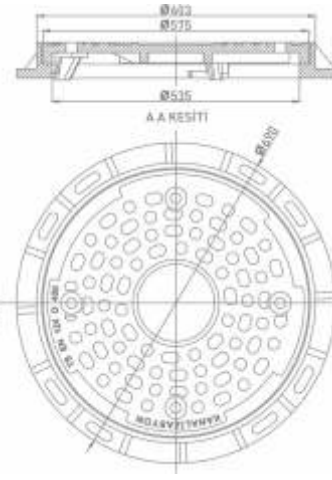
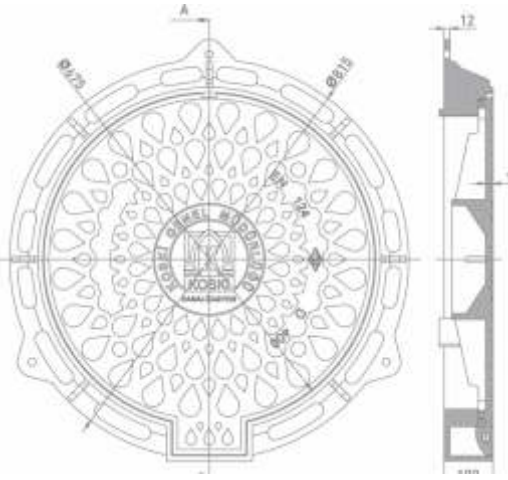


USD - 1134



Sewerage system grey iron casting rogar cover.

USD - 1133

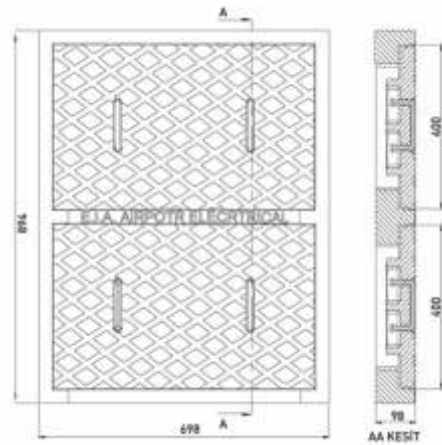
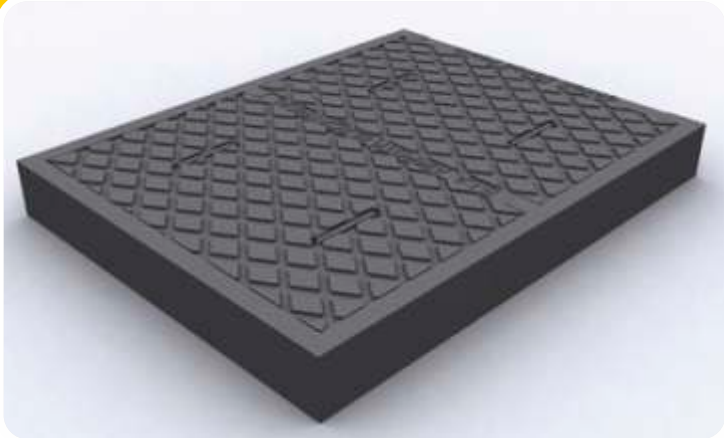


USD - 1135



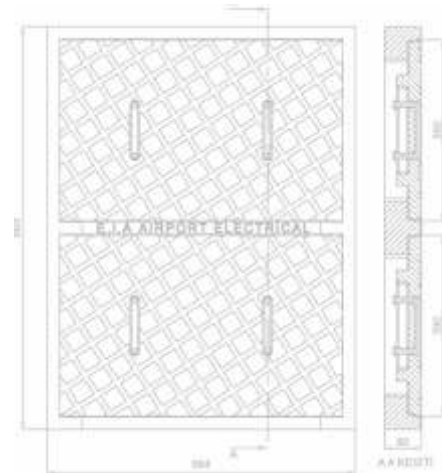
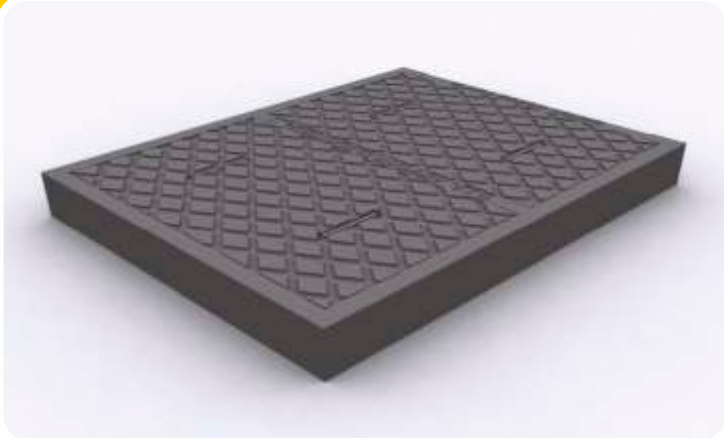
Sewerage system grey iron casting rogar cover It is painted with industrial dye.

USD - 1136



Cast iron double covered handhole cover.It is painted with industrial dye.

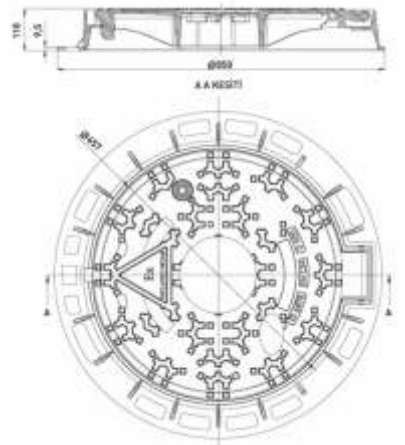
USD - 1137



Cast iron double covered handhole cover.It is painted with industrial dye.

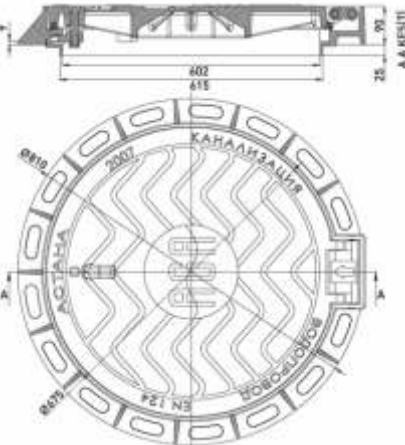


USD - 1138



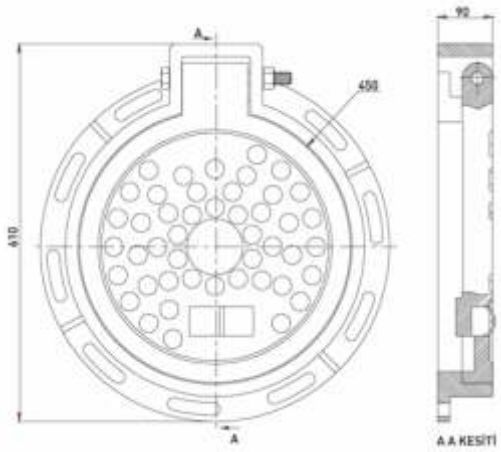
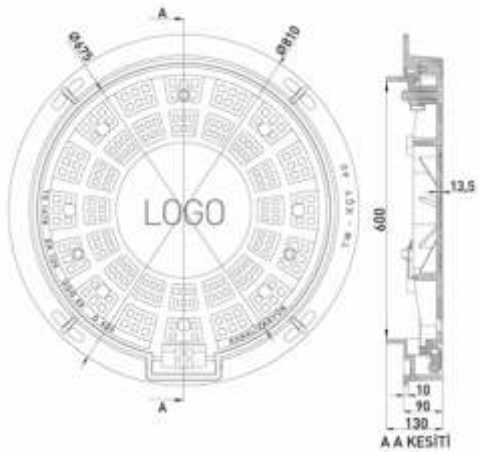
Ductile casting manhole cover.The hinge can open 110°It has settled lock.The cover and frame are milled by lathe."epdm 70±5 SHORE A type rubber gasket is assembled to the cover. It is painted with industrial dye. Stainless chrome nickel steel bolt and pins are used at the hinge.

USD - 1139



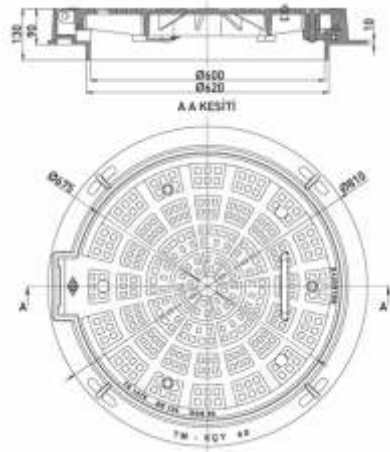
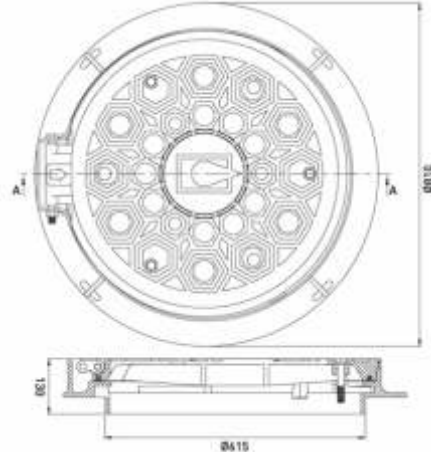
Ductile csting manhole cover. It has double hinged can open 180° it has one locks. The cover and frame are milled by lathe."EPDM 70±5 SHORE A typ T rubber gasket is assembled to the cover.It is painted with industrial dye.Stainless chorome nichel steel bolt and pins are used at the hinge and lock

USD - 1140



Ductile casting manhole cover. It has double hinged can open 180°. It has three locks. The cover and are milled by lathe. "EPDM 70±5 SHORE A" type "rubber gasket is assembled to the cover. It is painted with industrial dye. Stainless chrome nickel steel bolt and pins are used at the hinge and locks.

USD - 1141



Ductile casting manhole cover. It has double hinged can open 180°. It has three locks. The cover and are milled by lathe. "EPDM 70±5 SHORE A" type "rubber gasket is assembled to the cover. It is painted with industrial dye. Stainless chrome nickel steel bolt and pins are used at the hinge and locks.

USD - 1142



Hinged sewerage system grey iron casting rogar cover. It can open 110°.

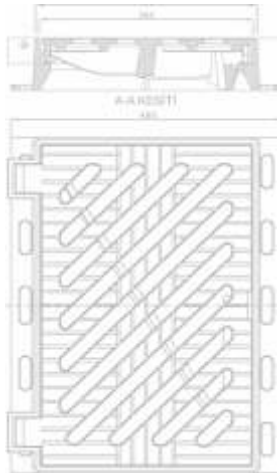
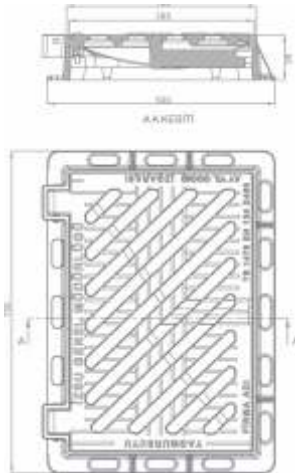
USD - 1143



Ductile casting manhole cover. It has double hinged can open 110°. It has three locks. The cover and frame are milled by lathe. "EPDM 70±5 SHORE A" type "T" rubber gasket is assembled to the cover. It is painted with industrial dye. Stainless chrome nickel steel bolt and pins are used at the hinge and locks.

Framed and Hinged Gratings

USD - 1144



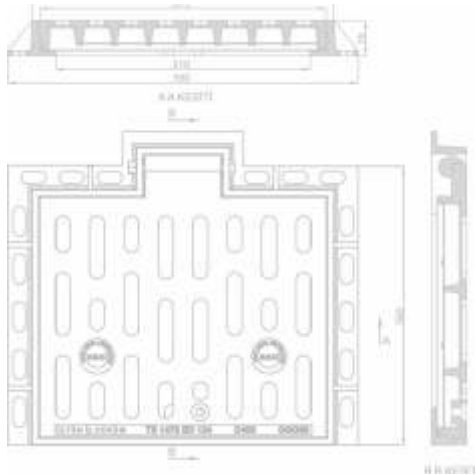
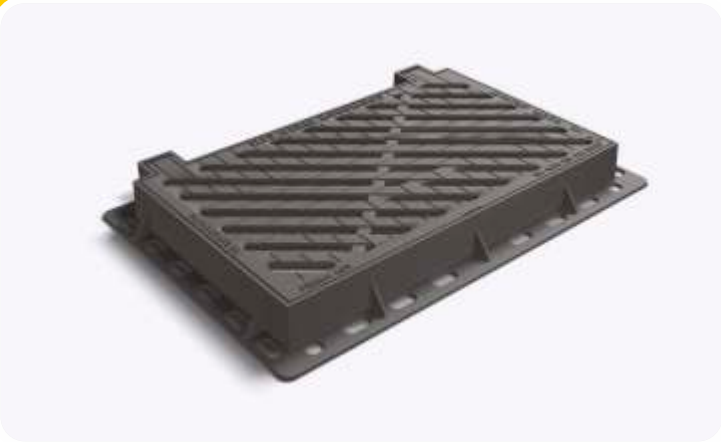
USD - 1146

Framed and Hinged Gratings

Ductile iron casting manhole grating.It is hinged can open 100°.It has stable locking device.It is painted with industrial dye.Stainless chrome nickel steel bolt and pins are used at the hinge and locks.

Ductile iron casting manhole grating.It is hinged can open 100°.It has stable locking device.It is painted with industrial dye.Stainless chrome nickel steel bolt and pins are used at the hinge and locks.

USD - 1145



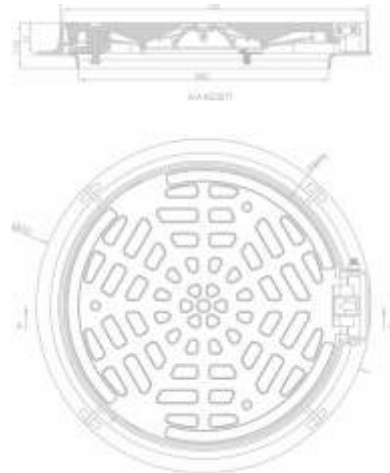
USD - 1147

Ductile iron casting manhole grating.It is hinged can open 100°.It has stable locking device.It is painted with industrial dye.Stainless chrome nickel steel bolt and pins are used at the hinge and locks.

Ductile iron casting manhole grating.It is hinged can open 100°.It has single lock.It is painted with industrial dye.Stainless chrome nickel steel bolt and pins are used at the hinge and locks.

Framed and Hinged Gratings

USD - 1148



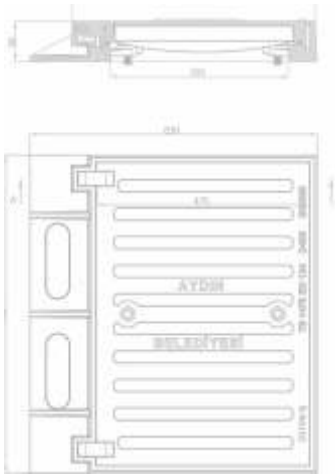
Framed and Hinged Gratings

USD - 1150

Ductile iron casting manhole grating.It is hinged can open 100°.It has one locking device..It is painted with industrial dye. EPDM 70±5 shore "A" type "T" rubber is assembled to grating.

Ductile iron casting manhole chimney grating.It is hinged can open 180°.It has three locks.The grating and frame are milled by lathe."EPDM 70 ± 5 SHORE A"type "T" rubber gasket is assembled to the grating.It is painted with industrial dye.Stainless chrome nickel steel bolt and pins are used at the hinge and locks.

USD - 1149



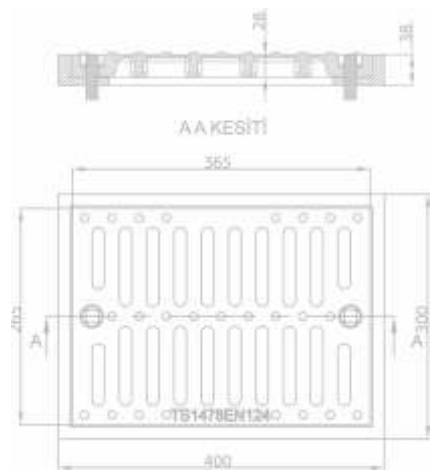
USD - 1151

Ductile iron casting manhole grating.It is hinged can open 180°.It has two locks.It is painted with industrial dye.Stainless chrome nickel steel bolt and pins are used at the hinge and locks.

Ductile cast iron manhole chimney hinged grill.

Framed and Hinged Gratings

USD - 1152



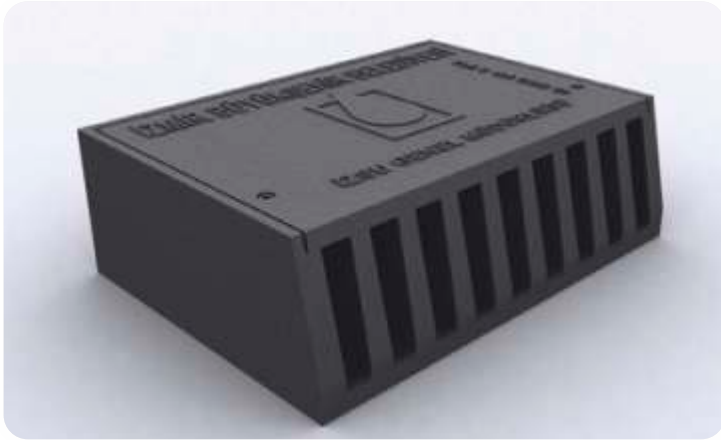
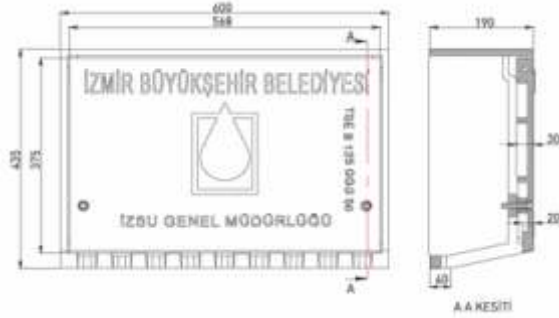
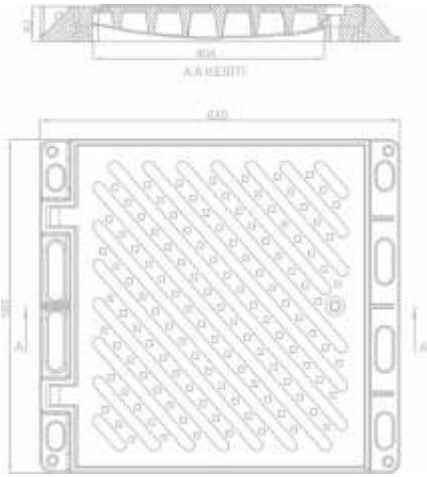
USD - 1154

Framed and Hinged Gratings

Ductile iron casting manhole chimney grating. It is hinged and can open 100°. It has a stable locking device. It is painted with industrial dye. Stainless chrome nickel steel bolt and pins are used at the hinge.

Ductile iron casting manhole chimney grating. It has two locks. Stainless chrome nickel steel is used at the lock bolt.

USD - 1153



USD - 1155

Ductile iron casting manhole chimney grating. It is hinged and can open 110°. It has a single lock. It is painted with industrial dye. Stainless chrome nickel steel bolt and pins are used at the hinge and locks.

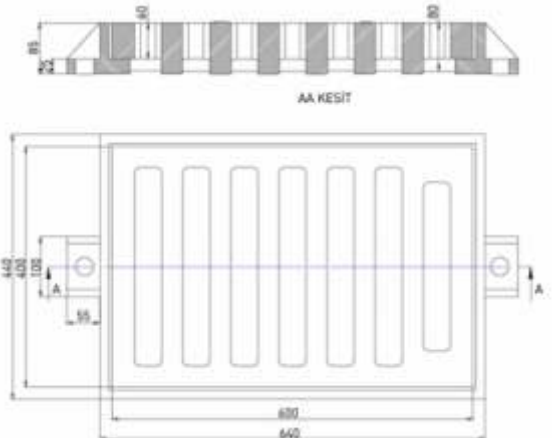
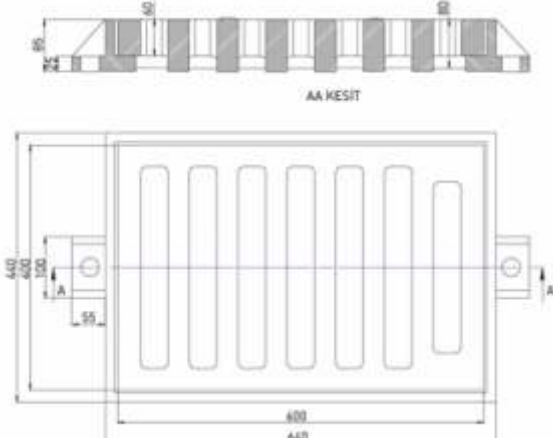
Ductile iron casting curb border grating. It is hinged and can open 100°. It is painted with industrial dye. The lock pin is stainless Cr-Ni steel.

Framed and Hinged Gratings

USD - 1156



- kg 96±3
- GG 25 EN GJL 250
- C 250



- kg 51±3
- GG 25 EN GJL 250
- C 250



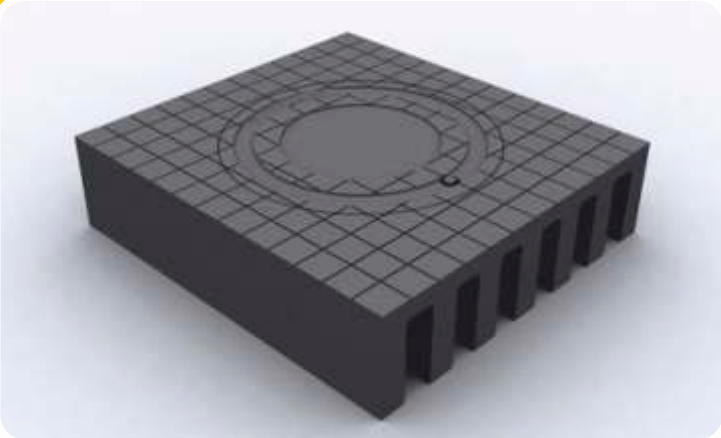
Framed and Hinged Gratings

USD - 1158

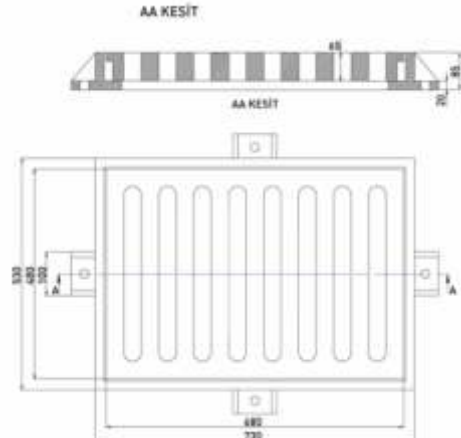
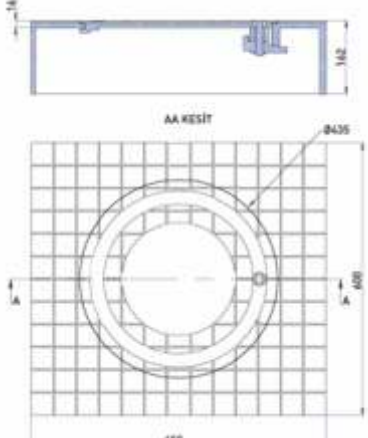
Grey cast iron rain water menhol grating.

Grey cast iron rain water menhol grating.

USD - 1157



- kg 68±3
- GG 50 EN GJS 500/7
- B 125
- 1



- kg 125±3
- GG 25 EN GJL 250
- C 250



USD - 1159

Ductile iron casting curb border grating with one lock. It is painted with industrial dye. The lock pin is stainless Cr-Ni steel.

Grey cast iron rain water menhol grating.

Framed and Hinged Gratings

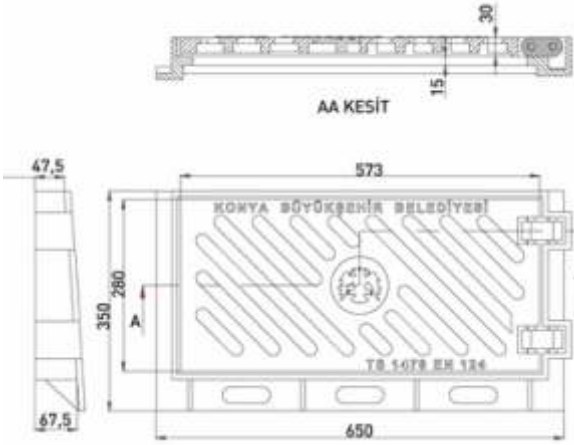
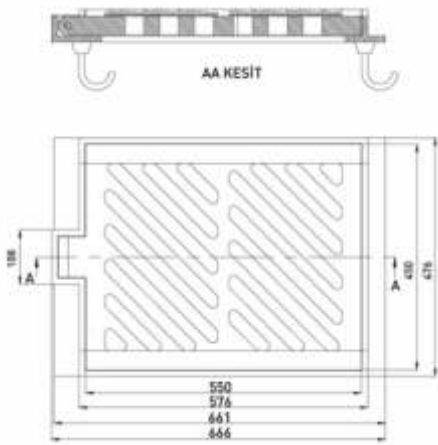
USD - 1160



kg
60±3

EN GJS 500/7

D 400



kg
40±3

EN GJS 500/7

C 250



Ductile casting manhole granting The hinge can be opened. 180° It is painted with industrial dye The hinge pin is stainless Cr- Ni steel.

Ductile iron casting manhole granting. The hinge can be opened 180° It is painted with industrial dye The hinge pin is stainless Cr- Ni steel.

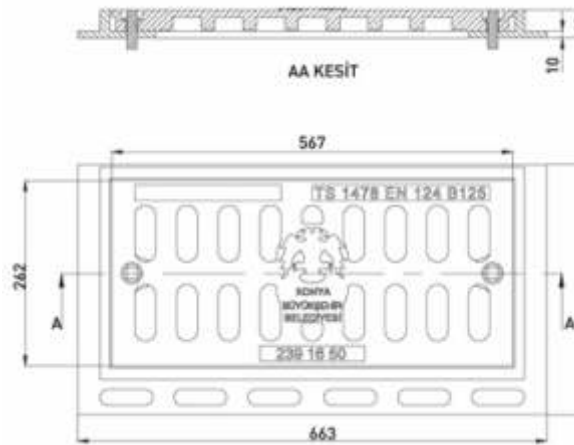
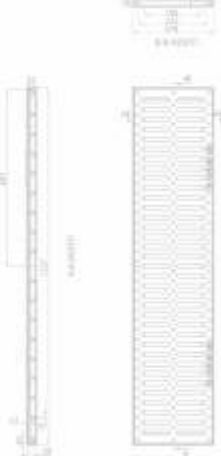
USD - 1161



kg
32±3

EN GJS 500/7

C 250



kg
32±3

EN GJS 500/7

C 250

2

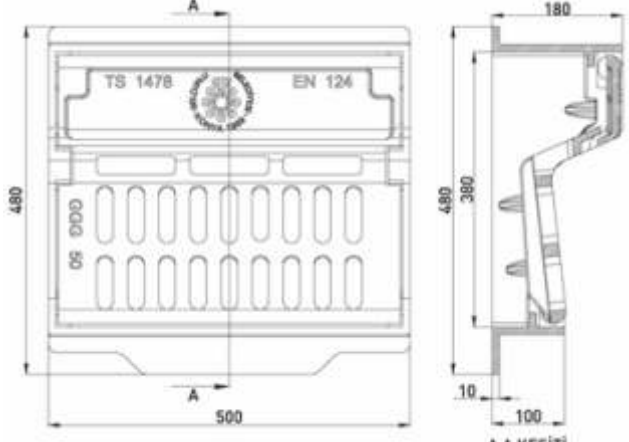
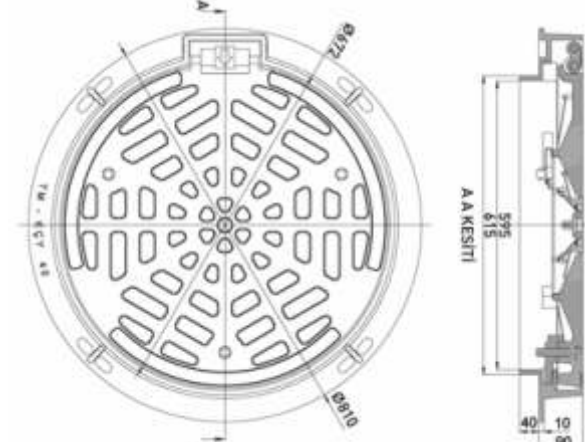


Ductile iron casting manhole chimney grating.Cover is put on the 30 mm "L" angle iron frame.

Ductile iron casting manhole grating It is painted with industrial dye.The lock pin is stainless Cr-Ni steel.

Framed and Hinged Gratings

USD - 1164



Ductile iron casting manhole chimney grating. It is hinged can open 180° It has 3 locks. The garting and fareme are milled by lathe " EPDM 70±5 SHORE A type T rubber gasket is assembled to the grating It is painted with industrial dye. Stainless chrome nickel steel bolt and pins are used at the hinge and locks.

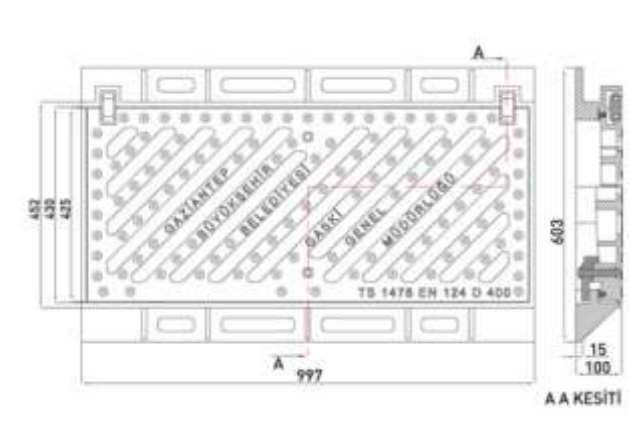
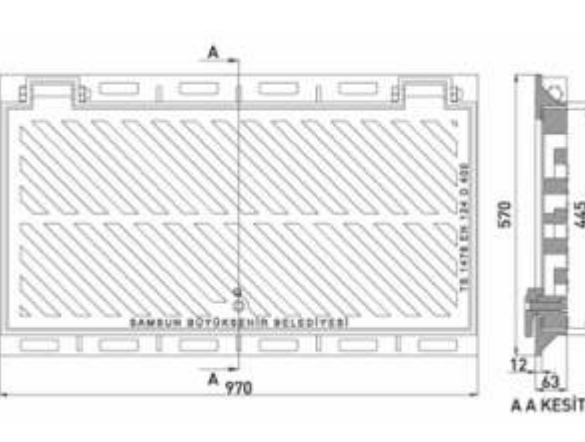
Ductile iron casting rain water grating. It is used continuation of gutter at the border of road It is hinged can open 100°. It is painted with industrial dye.

Framed and Hinged Gratings

USD - 1166



USD - 1165

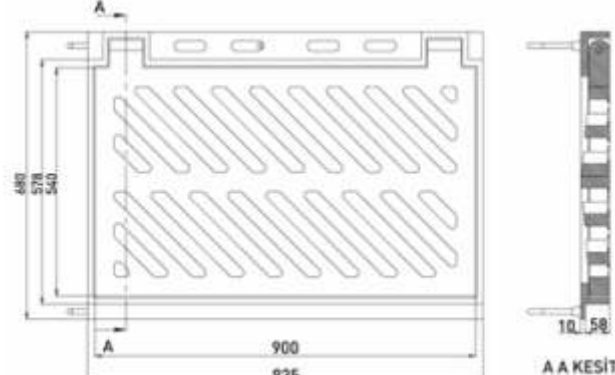
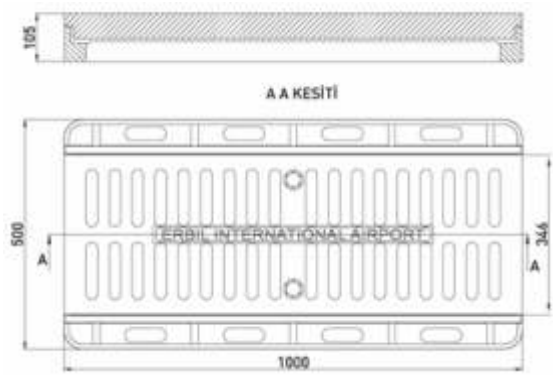


Ductile iron casting manhole chimney grating. It is hinged can open 100° It has single lock The grating and fareme are milled by lathe. It is painted with industrial dye. Stainless chrome nickel steel bolt and pins are used at the hinge and locks.

Ductile iron casting manhole chimney grating It is hinged can open 180°it has 2locks The grating an dfareme are milled by lathe " EPDM 70±5 SHORE A type T rubber gasket is assembled to the grating.It is painted with industrial dye Stainless chrome nickel steel bolt and pins are used at the hinge and locks .

Framed and Hinged Gratings

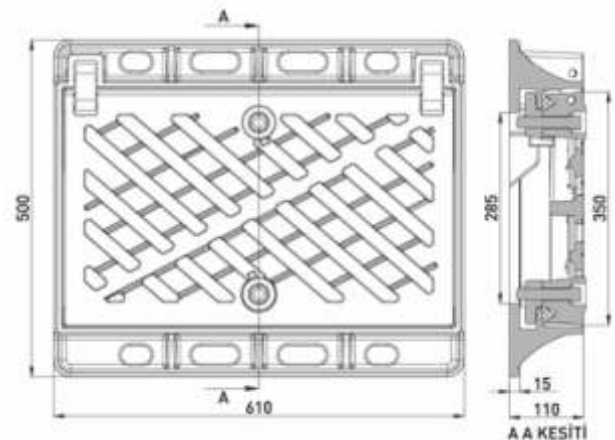
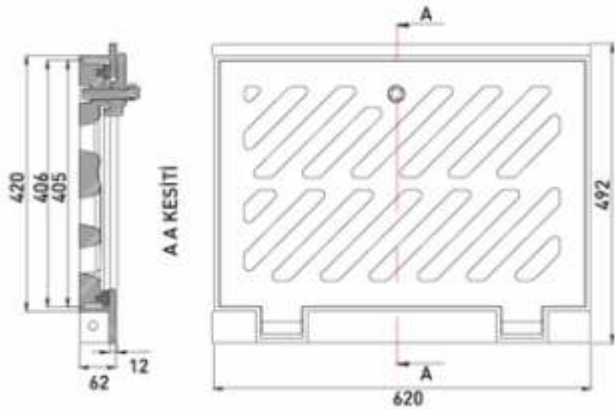
USD - 1168



Ductile iron casting manhole chimney grating. It has 2 locks. The grating and frame are milled by lathe. EPDM 70±5 SHORE A type T rubber gasket is assembled to the grating. It is painted with industrial dye. Stainless chrome nickel steel bolt and pins are used at the locks.

Ductile iron casting manhole grating. It can be opened 100°. It is painted with industrial dye. The hinge pin is stainless Cr-Ni steel.

USD - 1171

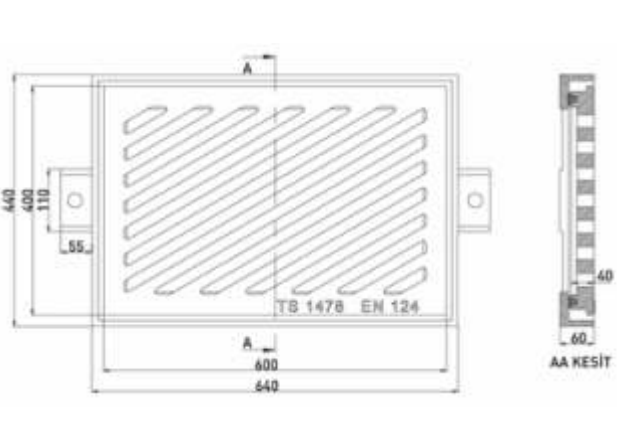
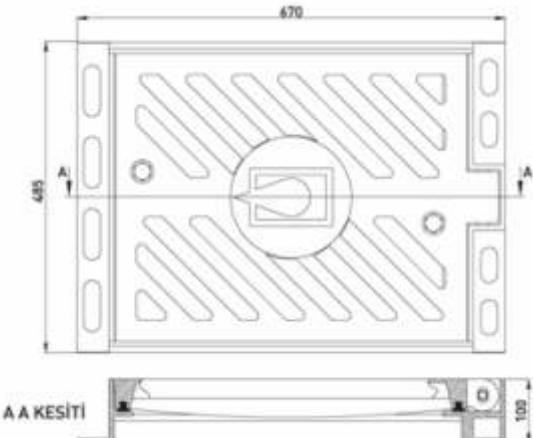


Ductile iron casting manhole chimney grating. It is hinged, can open 100°. It has a single lock. The grating and frame are milled by lathe. EPDM 70±5 SHORE A type T rubber gasket is assembled to the grating. It is painted with industrial dye. Stainless chrome nickel steel bolt and pins are used at the hinge and locks.

Ductile iron casting manhole chimney grating. It is hinged, can open 180°. It has 2 locks. The grating and frame are milled by lathe. EPDM 70±5 SHORE A type T rubber gasket is assembled to the grating. It is painted with industrial dye. Stainless chrome nickel steel bolt and pins are used at the hinge and locks.

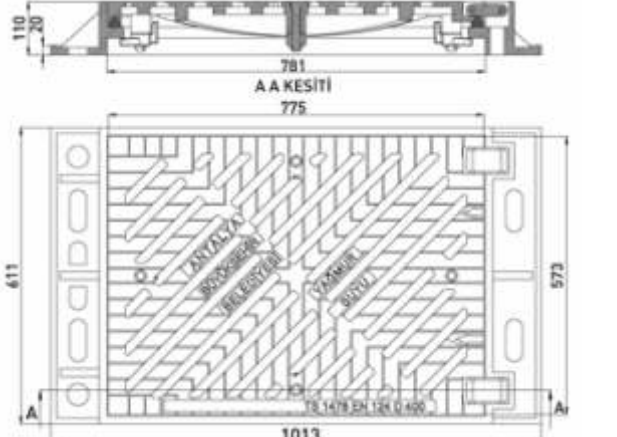
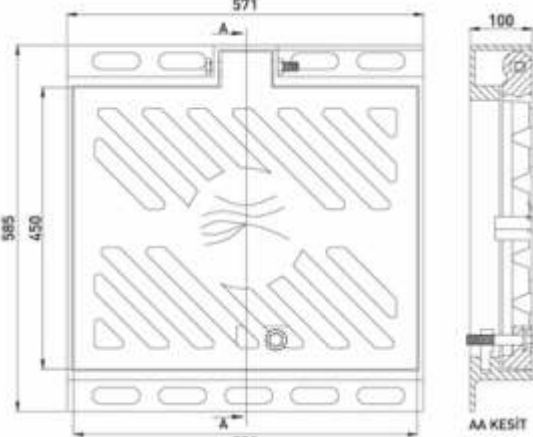
Framed and Hinged Gratings

USD - 1172



Dictule iron casting manhole chimney grating It is hinged can open 100° It ha single lock. The grating and frame are milled by lathe "EPDM 70±SHORE A type T rubber gasket is assembled to the grating It is painted with industrial dye. Stainless chorome nickel steel bolt and pins are used at the hinge and locks.

USD - 1173



,Ductile iron casting manhole chimney grating It is hinged can open 100° It has single lock The grating and frame are milled by lathe "EPDM 70±5 SHORE A type T rubber casket is assembled to the grating It is painted with industrial dye. Stainless chorome nickel steel bolt and pins are used at the hinge and locks.

Framed and Hinged Gratings

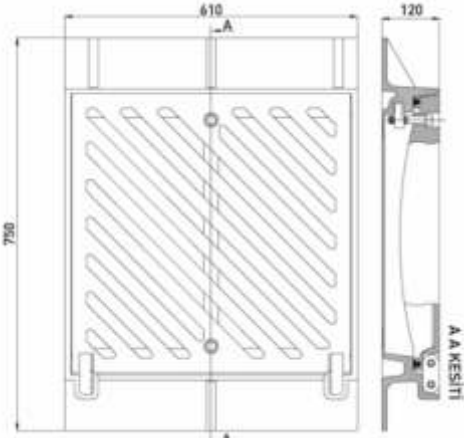
USD - 1174



Ductile iron casting manhole chimney grating. It is hinged can open 180° it has 4 locks The grating and frame are milled by lathe "EPDM 70±5 SHORE A tipi T rubber gasket is assembled to the grating. It is painted with industrial dye. Stainless chorome nickel steel bolt and pins are used at the hinge and locks.

Framed and Hinged Gratings

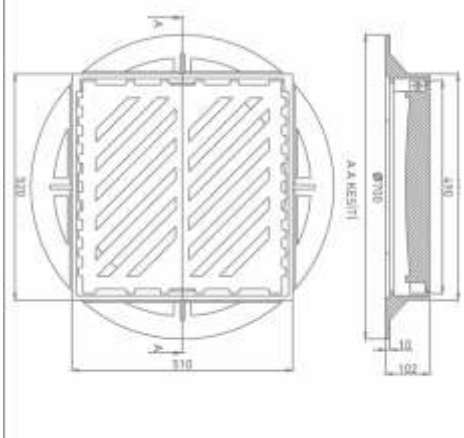
USD - 1176



Ductile iron casting manhole chimney grating. It is hinged can open 180°it has 2 locks The grating and frame are milled by lathe "EPDM 70±5 SHORE A type T rubber gasket is assembled to the grating It is painted with industrial dye. Stainless chorome nickel steel bolt and pins are used at the hinge and locks.

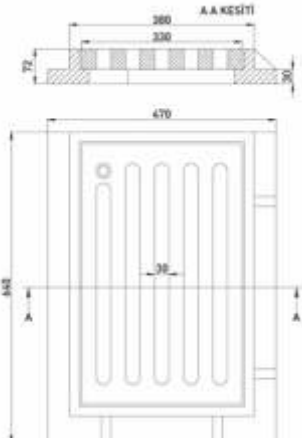
Ductile iron casting manhole chimney grating Itis hinged can open 180°It has 2 locks The grating and frame are milled by lathe."epdm 70±5 shore A type T rubber gasket is assembled to the grating It is painted with industrial dye. Stainless chrome nickel steel bolt and pins are used at the hinge and locks.

USD - 1177



Ductile iron casting manhole chimney grating with mud buchet. It is hinged can open 100°It is painted with industrial dye.

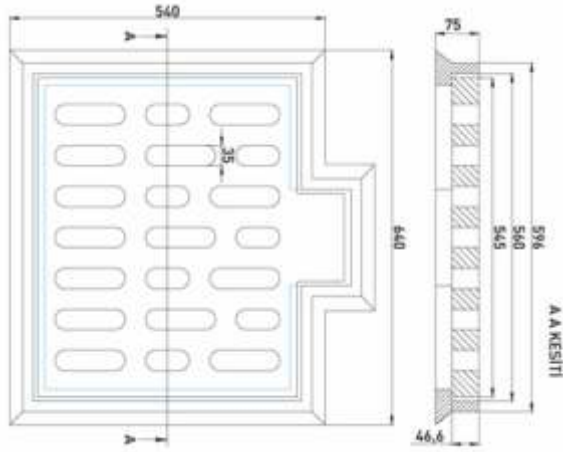
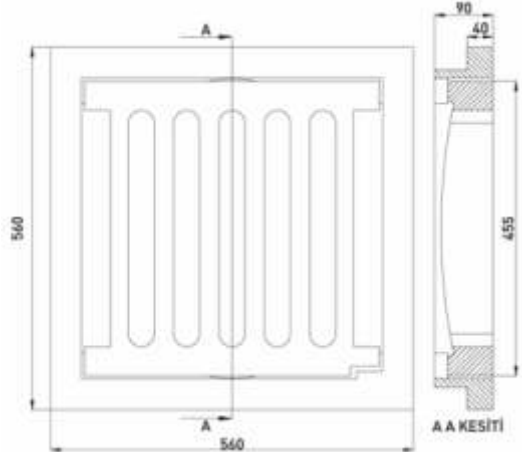
USD - 1179



Grey iron casting rainwater and churn water manhole chimney grating The grating is fixed to the frame with screw.

Framed and Hinged Gratings

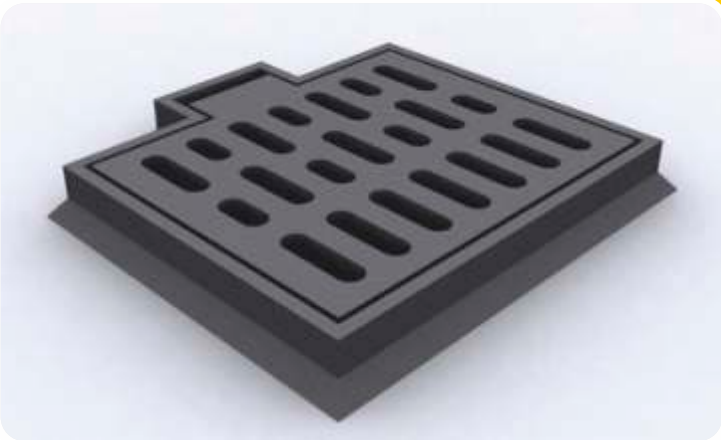
USD - 1180



Pik Grey iron casting rainwater and churn water manhole chimney grating It is hinged can open 100°

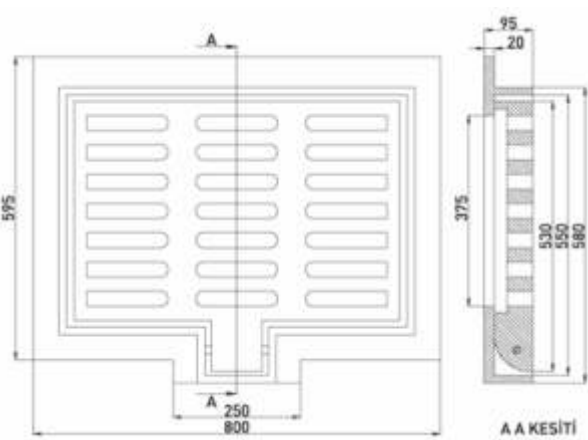
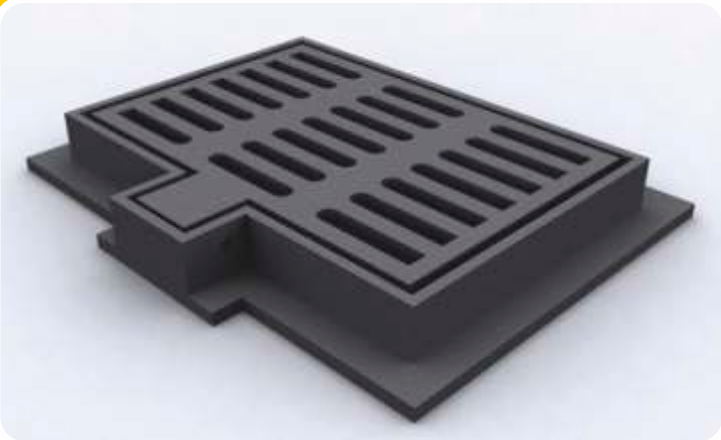
Framed and Hinged Gratings

USD - 1182



Grey iron casting rainwater and churn water manhole chimney grating It is hinged can open 100°

USD - 1181



Grey iron casting rainwater and churn water manhole chimney grating It is hinged can open 100°

Framed and Hinged Gratings

USD - 1183



Rubber Gasket

Framed and Hinged Gratings

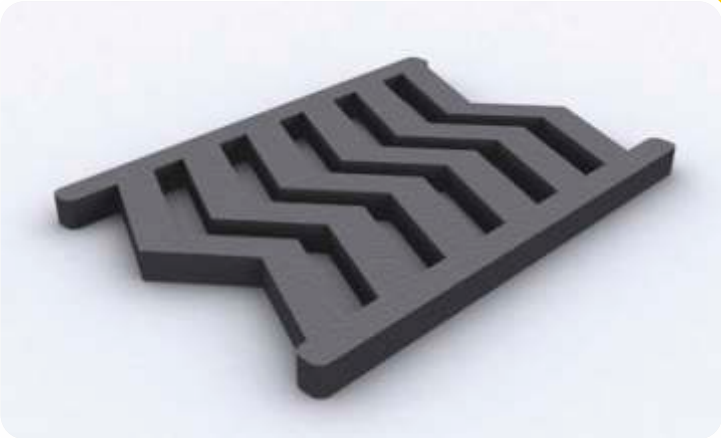
USD - 1184



Düz Sfero / Straight Ductile



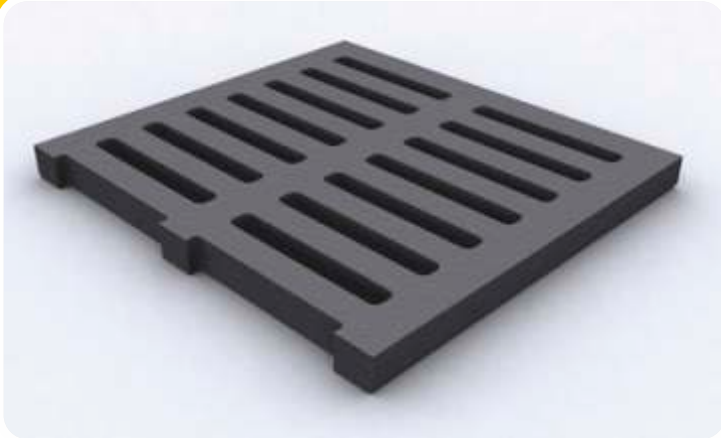
USD - 1185



Kırık / Broken Line



USD - 1188



Çift Kanallı / Dual Channel

Framed and Hinged Gratings

USD - 1190



Çift Kanallı / Dual Channel

USD - 1186



Oluklu / Guttered

USD - 1187



Üç Kanallı / Triple Channel

USD - 1189



Düz / Straight

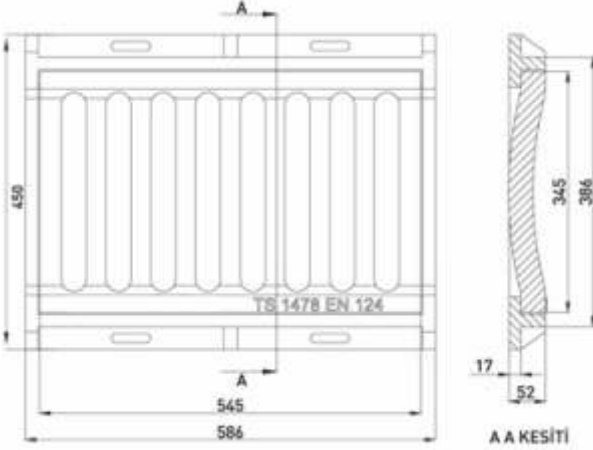
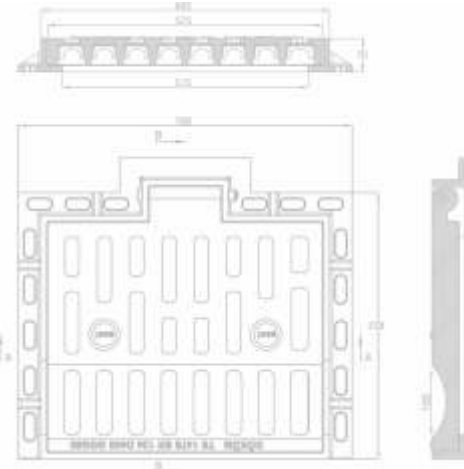
USD - 1191



Sarkık / Dropping

Guttered Gratings

USD - 1192



Ductile iron casting curb border guttered grating. The hinge can be opened 100°. It is painted industrial dye. It can be used by the roadside through the waterway. The hinge pin is stainless Cr-Ni steel.

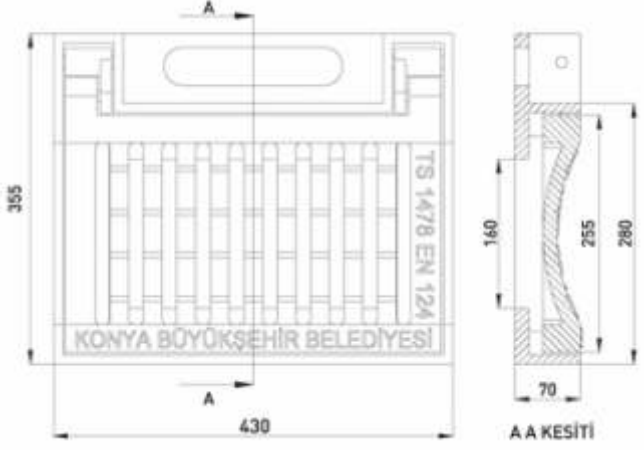
Guttered Gratings

USD - 1194



Ductile iron casting manhole chimney grating. It is hinged and can open 100°. The grating and frame are milled by lathe. It is painted with industrial dye. Stainless chrome nickel steel pins are used at the hinge.

USD - 1193



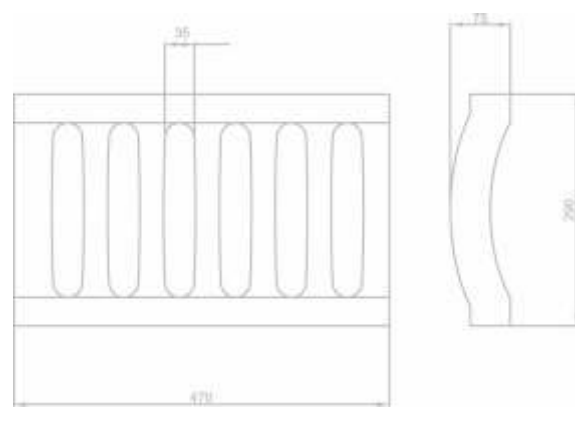
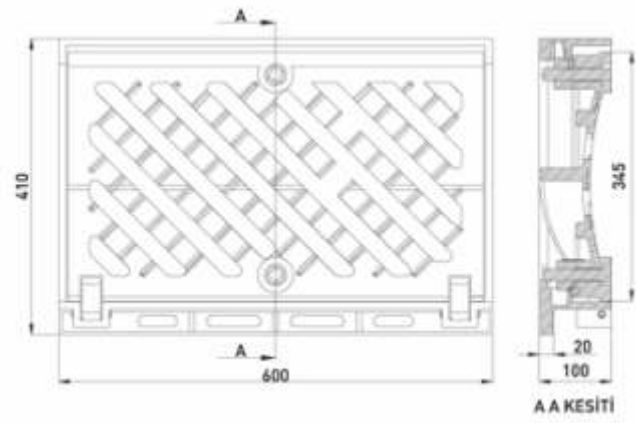
Ductile iron casting, guttered and frame rain water grating; it is used as a continuation of gutter at the border of road.

USD - 1195



Guttered Gratings

USD - 1196



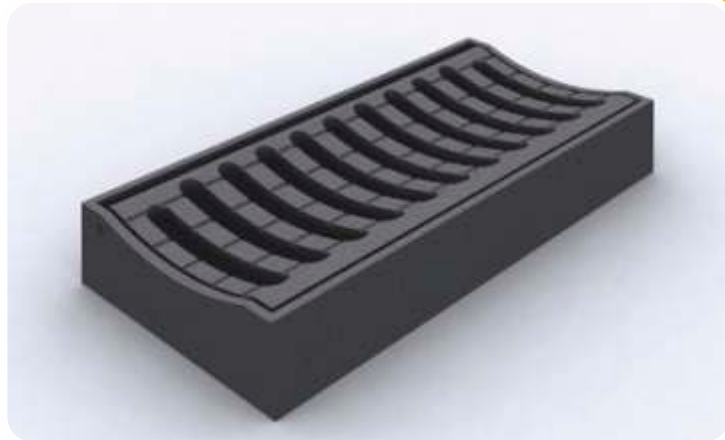
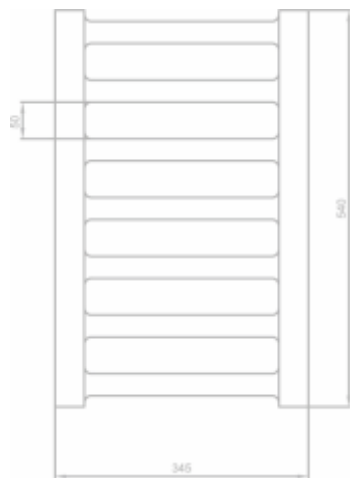
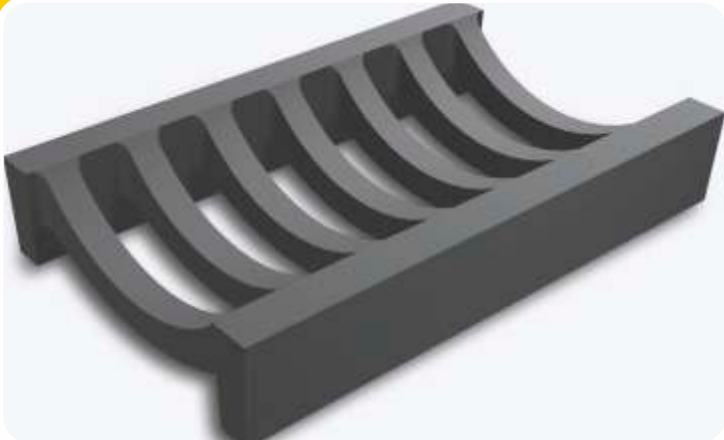
Guttered Gratings

USD - 1198

Ductile iron casting manhole chimney granting. It is hinged can open 180° It has 2 locks The grating and fareme are milled by lathe "EPDM 70±5 SHORE A type T rubber gasket is assembled to the granting It is painted with industrial dye. Stainless chrome nickel steel bolt and pins are used at the hinge and locks.

Grey iron casting,guttered and frame rain water grating;it is used continuation of gutter at the border of road.

USD - 1197



USD - 1199

Grey iron casting,guttered and frame rain water grating;it is used continuation of gutter at the border of road.

Ductile iron casting curb border guttered grating. The hinge can be opened 100°It is painted industrial dye.It can be used by the roadside through the waterway The hinge pin is stainless Cr-Ni steel.

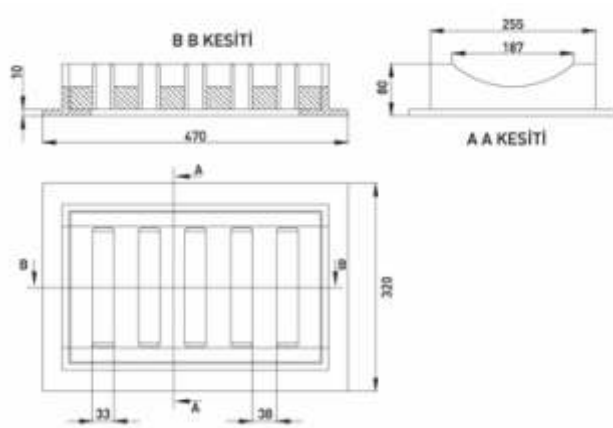
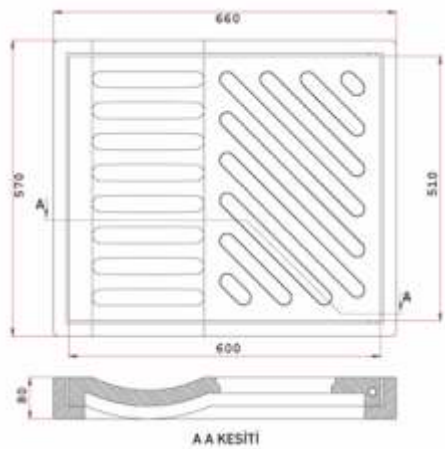
Guttered Gratings

USD - 1200



Guttered Gratings

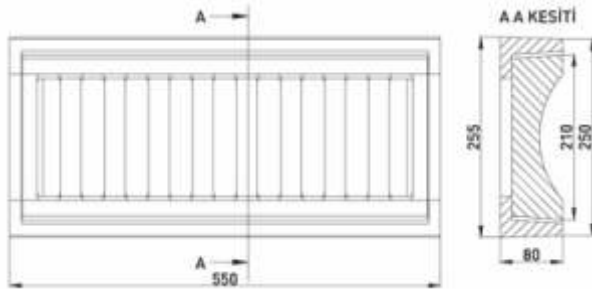
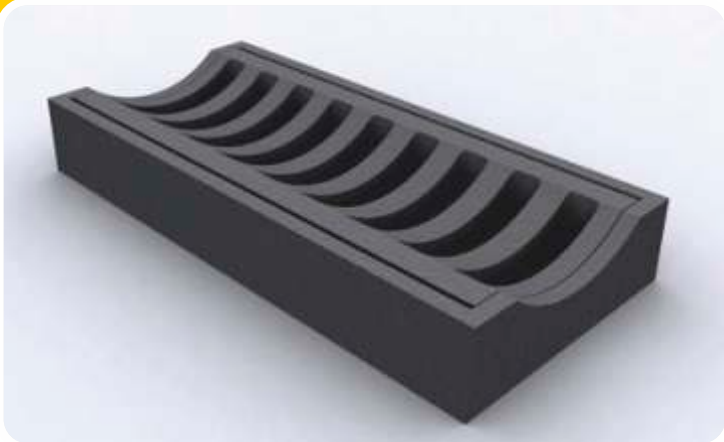
USD - 1202



Grey iron casting, guttered and faremed rain water grating;it is used continuation of gutter at the border of road.

Grey iron castinag guttered and faremed rain water grating;it is used continuation of gutter at the border of road

USD - 1201



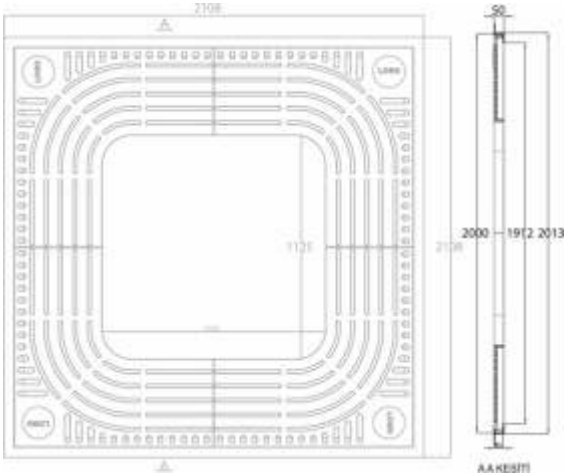
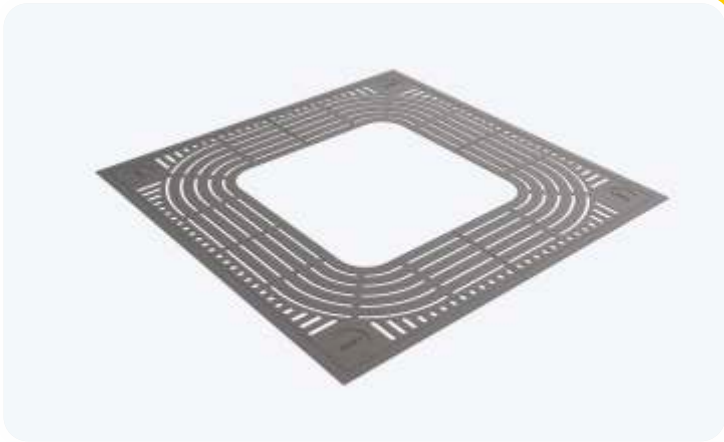
Grey iron casting, guttered and faremed rain water grating;it is used continuation of gutter at the border of road

USD - 1203



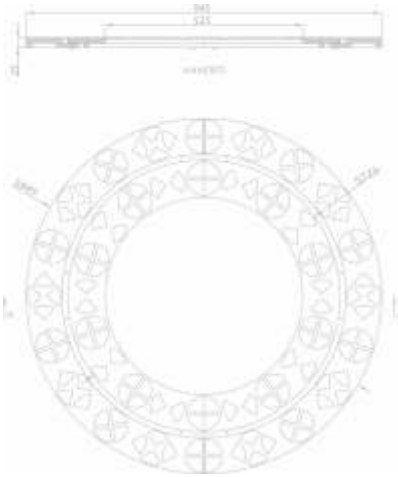
Grey iron or ductile casting, pavement border component; It is painted static and put on reflector metal.

USD - 1205



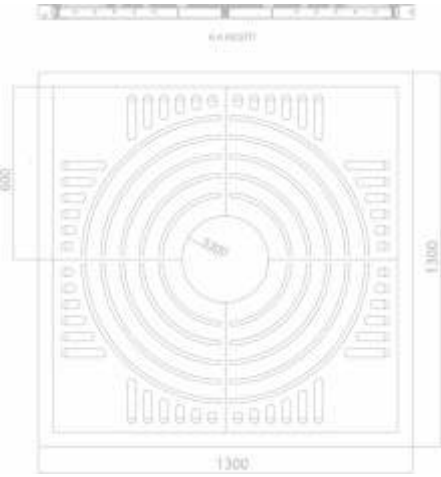
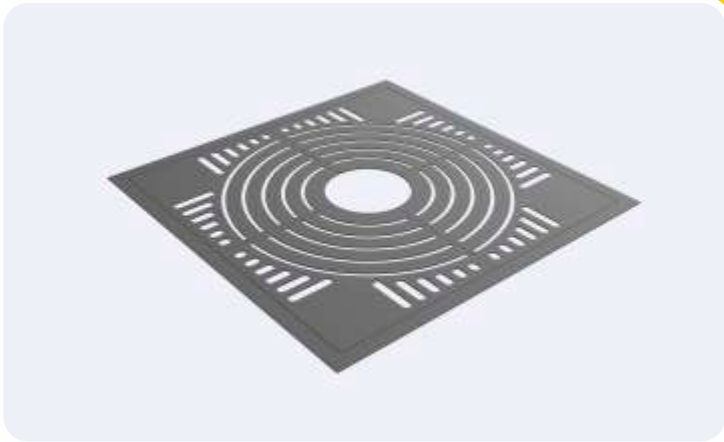
Ductile iron casting, protection of the bottom of trees at the park, gardens and pavement. The frame is made from 50 mm "L" angle iron.

USD - 1204



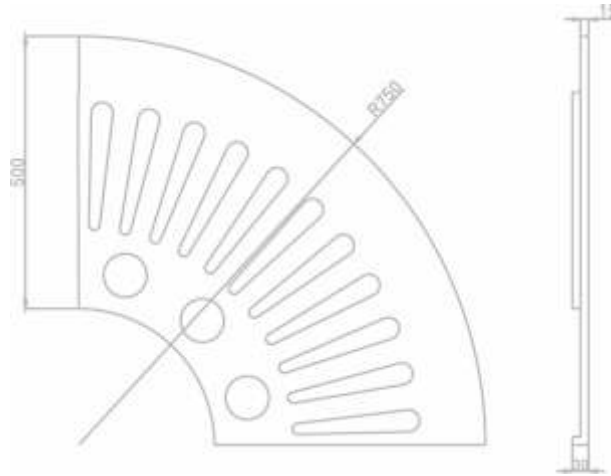
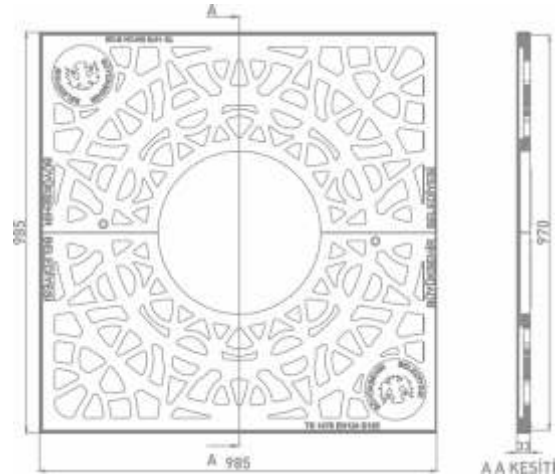
Ductile iron casting, protection of the bottom of tree; it is used at the bottom of trees at the park, gardens and pavement

USD - 1206



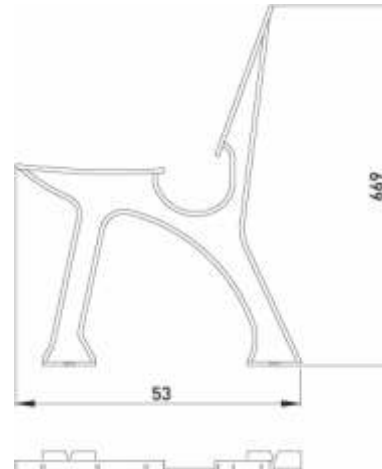
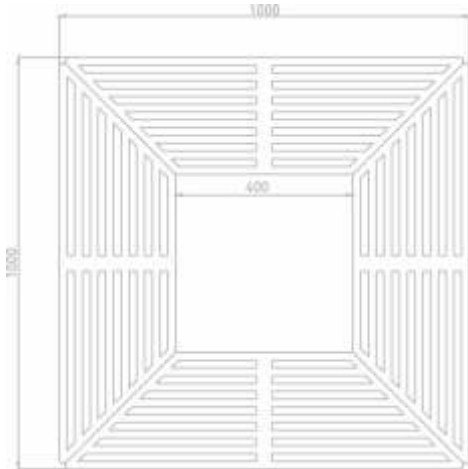
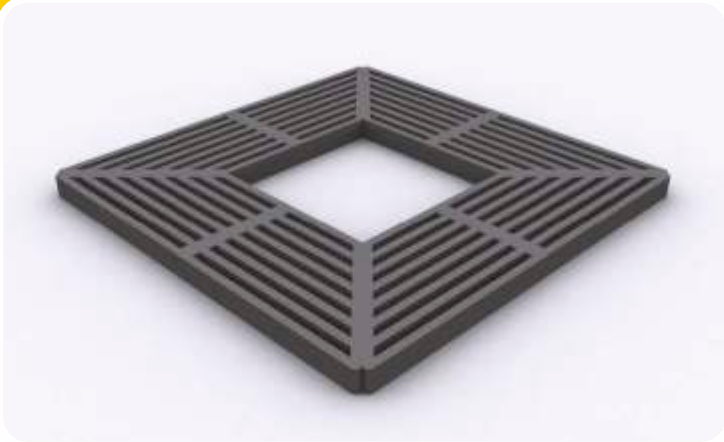
Ductile iron casting, protection of the bottom of trees at the park, gardens and pavement. The frame is made from 50 mm "L" angle iron.

USD - 1207



Grey iron casting protection of the bottom of tree it is used at the bottom of trees et the park gardens and pavement.

USD - 1208



Grey iron casting protection of the bottom of tree it is used at the bottom of trees et the park gardens and pavement.

USD - 1209



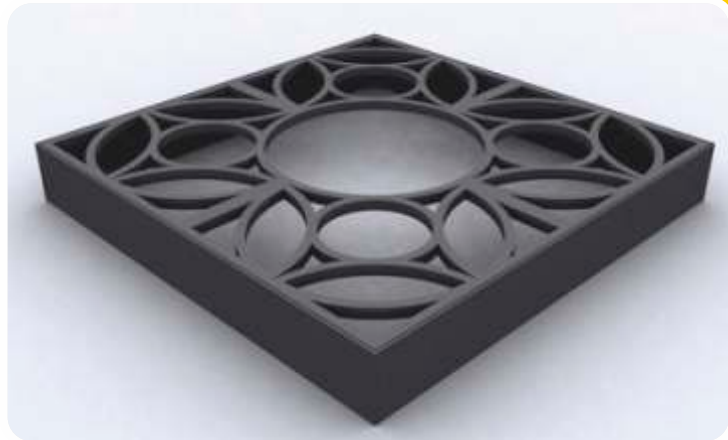
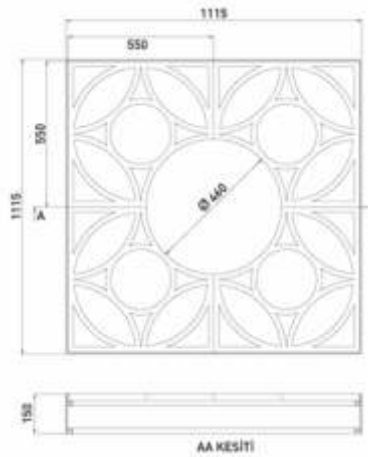
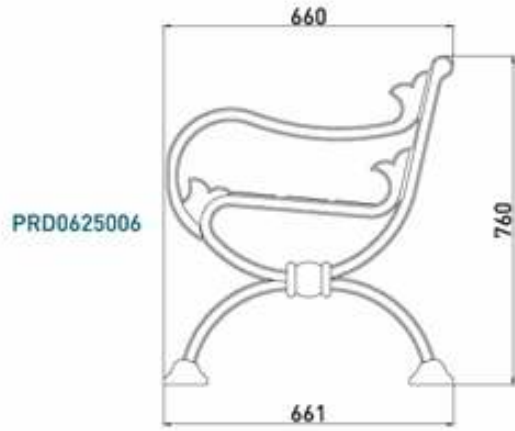
Grey iron casting protection of the bottom of tree it is used at the bottom of trees et the park gardens and pavement.

USD - 1210



Grey iron casting bench's foot.

USD - 1211

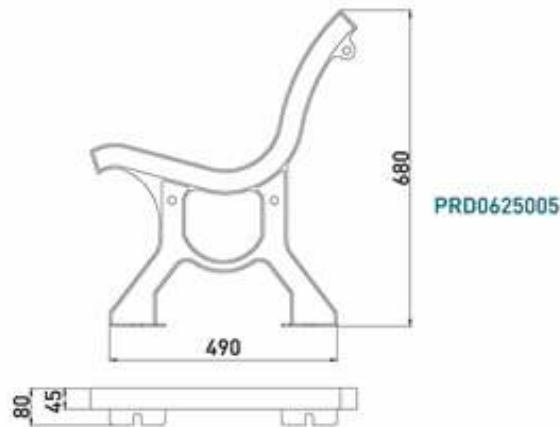


USD - 1213

Grey iron casting bench's foot.

Grey iron casting, protection of the bottom of tree;it is used the bottom of trees ta the park, gardens and pavament.

USD - 1212

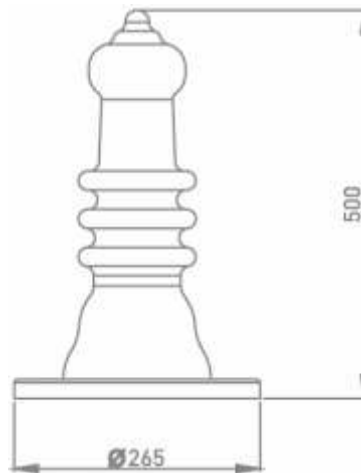


USD - 1214

Grey iron casting bench's foot.

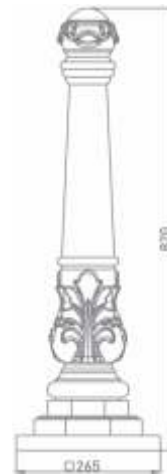
Grey iron or ductile casting pavement border componet;It is painted static and put on reflector metal.

USD - 1215



Grey iron or ductile casting pavement border componet;It is painted static and put on reflector metal.

USD - 1216



Grey iron or ductile casting pavement border componet;It is painted static and put on reflector metal.

USD - 1217



Grey iron or ductile casting pavement border componet;It is painted static and put on reflector metal.

USD - 1218



Grey iron or ductile casting pavement border componet;It is painted static and put on reflector metal.



Class A15

Sadece yaya kullanımına açık yaya yolu, bisiklet yolu ve yeşil alanlar

Areas which can only be used by pedestrians and pedal cyclists green areas.



Class B125

Patikalar yaya bölgeleri ve benzeri alanlar özel otoparklar ve otopark güverteleri

Footways pedestrian areas and comparable areas, private car parks and parking decks.



Class C250

Yol kenarı kaldırım bördür sınırından yol kaplamasına kadar en fazla 0,5 m yay yoluna doğru en fazla 0,2 m giren kenar drenaj kanalları

Roadside areas (kerbs) stretching maximum 0,5 m into the carriageway and maximum 0,2 m into footway.



Class D400

Yol kaplamaları üstü (yaya yolu dahil) sert banketler ve her tip karayolu taşıtı için park alanları

Carriageways of roads (pedestrian streets included), hard shoulders and parking areas for all types of road vehicles



Class E600

Ağır taşıma yüküne maruz kalan limanlar, endüstriyel bölgeler, yük aktarım alanları

Areas subject to high loads such as ports, industrial areas and areas where goods are unloaded



Class F900

Çok ağır yüke maruz kalan hava alanları, yük aktarım alanları, konteyner garajları

Areas subject to very high loads such as airports and areas where containers are unloaded

